



GSW TOMM™

THE BEST MANIKIN FOR THE WORST SITUATIONS

Simulate small arms fire and TCCC safely and effectively with the **GSW TOMM** product package, available from **ITTS**.

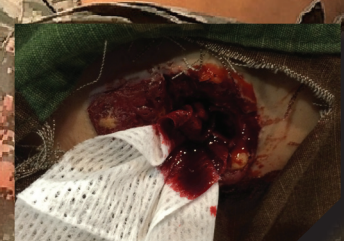
Combining the industry-leading **TOMManikin™** with reliable, low-maintenance non-pyrotechnic based systems, **GSW TOMM** seamlessly blends realistic threat simulation into your medical training scenarios, creating a more dynamic experience for your team.

BALLISTIC SIMULATOR FEATURES:

- 140 dB all-weather, portable, lightweight, air-cooled, oxygen/propane-operated, ground-mounted, instant fire, automatic weapon simulator designed for either semi or full-auto fire (15-round/sec).
- Provides capability to simulate wide variety of weapons.
- Extremely cost-effective operation.
- No environmental impact.
- Easy Maintenance (common available parts and fittings).
- COMPATIBLE WITH ALL OTHER ITTS PRODUCTS.
- Remote-control operated (included).

GSW TOMMANINKIN OPERABLE PROCEDURES:

- Tourniquet capable.
- Active bleeding w/ pressure points.
- Nasopharyngeal & oral airways.
- Surgical airway with realistic bleeding and tissue dissection.
- Bilateral Needle decompression
- Realistic sucking chest wound (w/ mid-axillary exit wound).
- Through & through GSW to rt leg.
- Pelvic & leg injuries responsive to direct pressure and tourniquets.
- Packable GSW to groin (w/ posterior exit wound).
- Radial pulses in uninjured upper extremities and carotid.
- Variable pulse rate & pressure.
- IO (sternal & humoral) and IV access on uninjured upper extremities.
- Packable evisceration.
- Wound packing.
- Realistic patient bending and rotation.



CALL NOW



4ITTS.COM

EMAIL: INFO@TOMMANIKIN.COM

TOLL FREE 1.866.839.3455



© 2016 Innovative Tactical Training Solutions. All rights reserved.